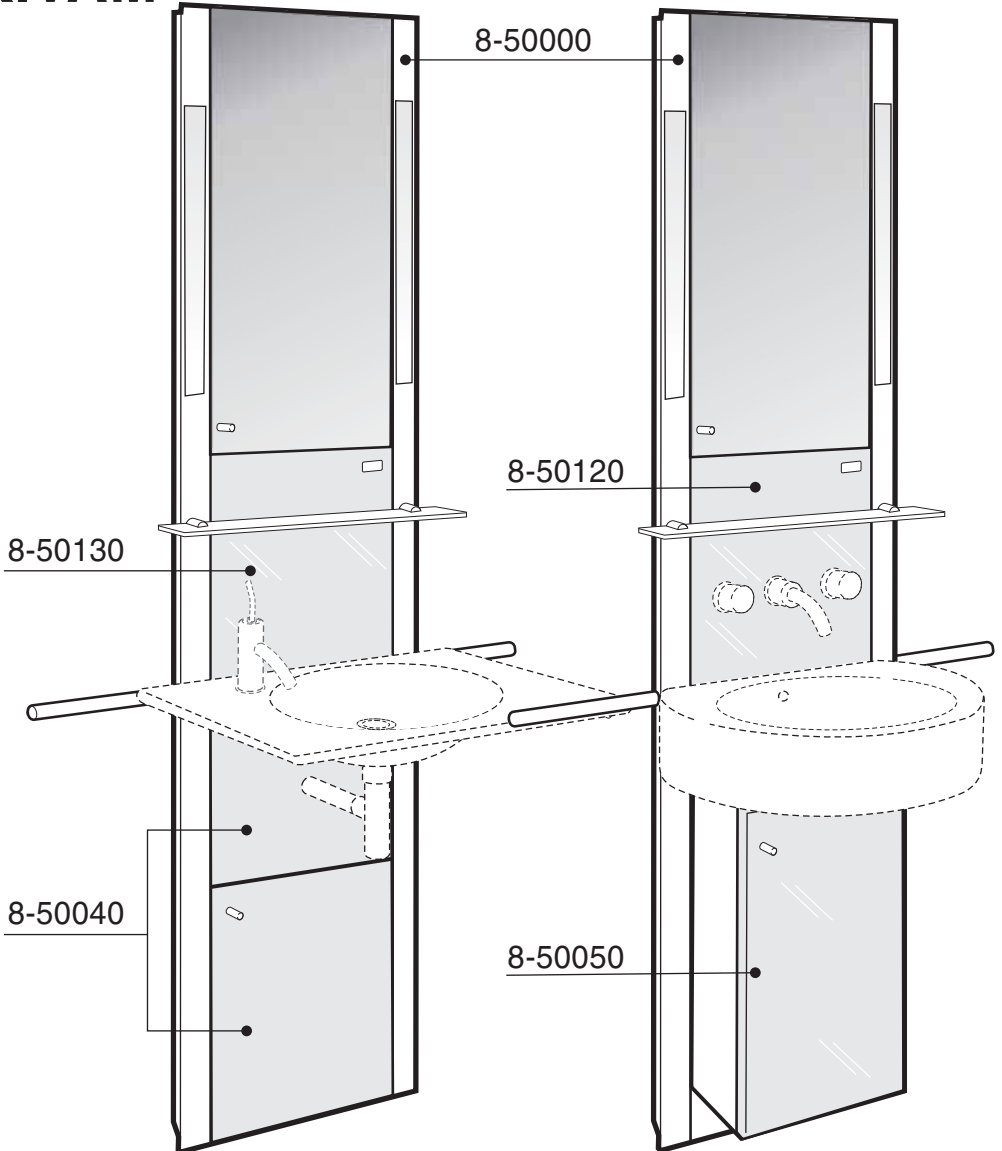


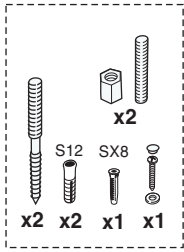
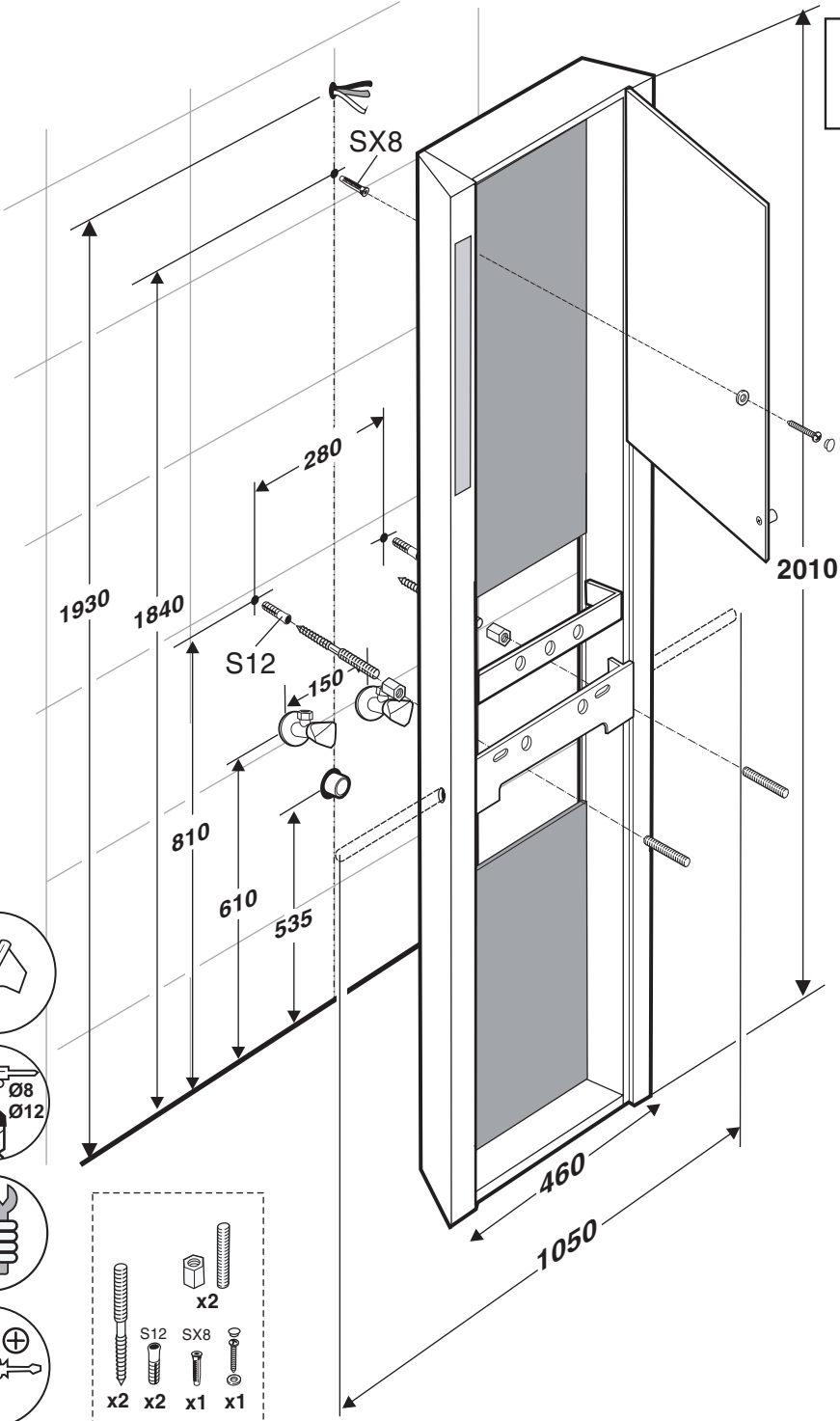


**Roca**

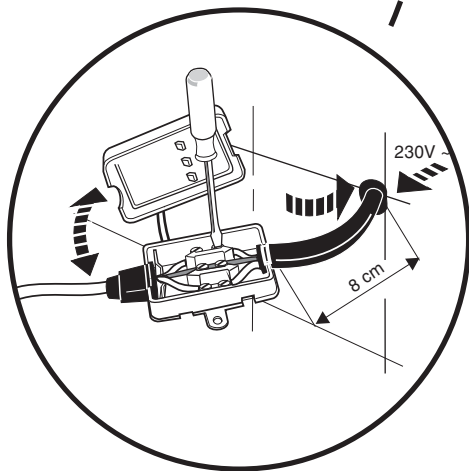
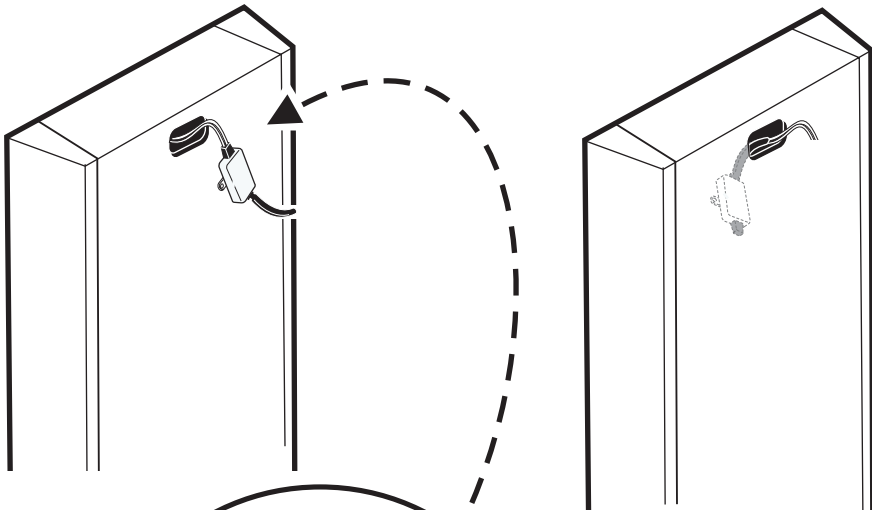
# KIVAM



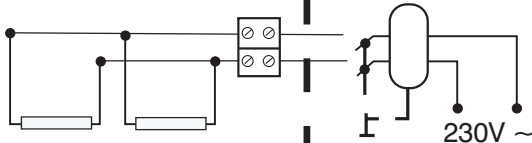
**1**



2



- Interruptor diferencial
- Differential switch
- Interrupteur différentiel
- Differentialschalter
- Interruttore differenziale
- Interruptor diferencial
- Wyłącznik różnicowy
- Diferansiyel düğmesi



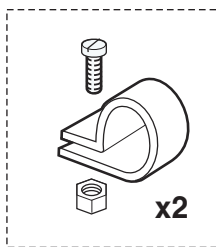
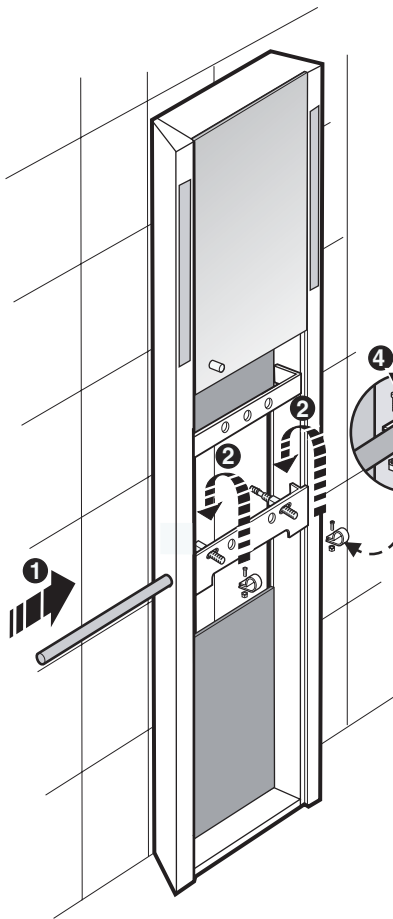
P.max. 2x14 W

- No incluidas en el suministro
- Not included in supply
- Livrables a part
- Gehört nicht zum Lieferumfang
- Disponibili a richiesta
- Não incluídos no abastecimento
- Nie dostarcza się w komplecie
- Tedarik edilmemektedir.

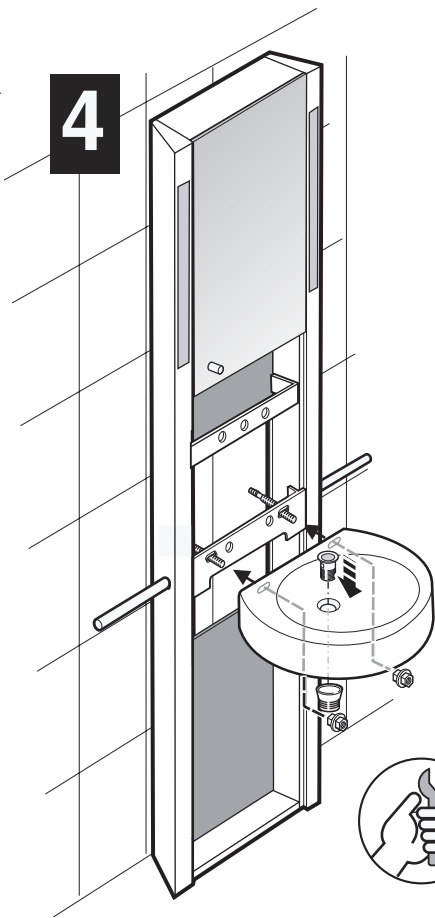


A special instruction is intended only for UK installers and the countries where the plug socket is prohibited in bathrooms. Please, follow the instruction 8-58401 attached in specific plastic bag.

3

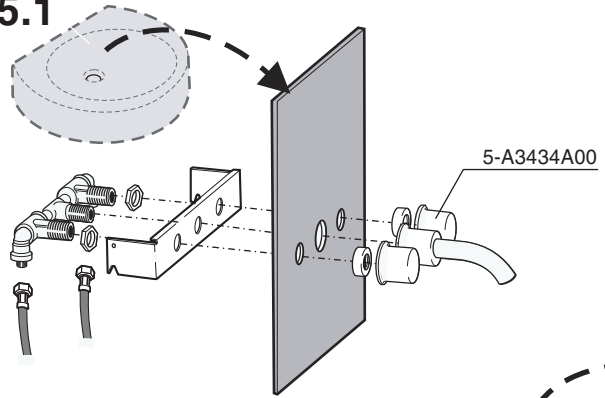


4

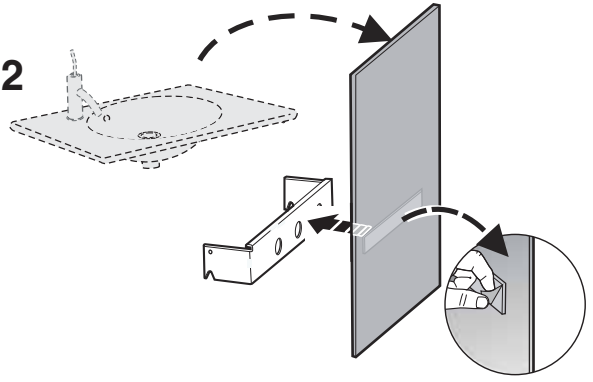


# 5

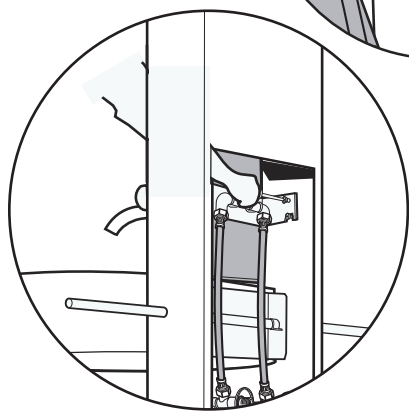
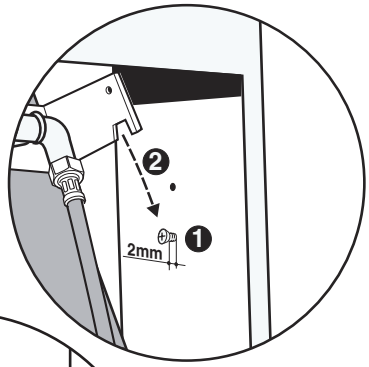
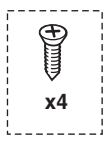
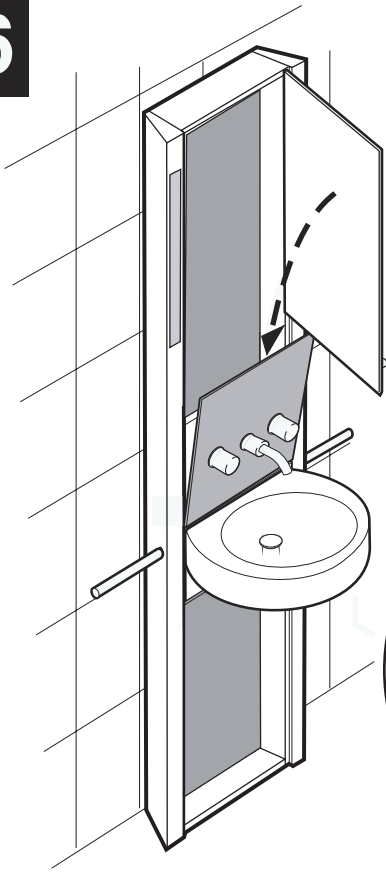
5.1



5.2

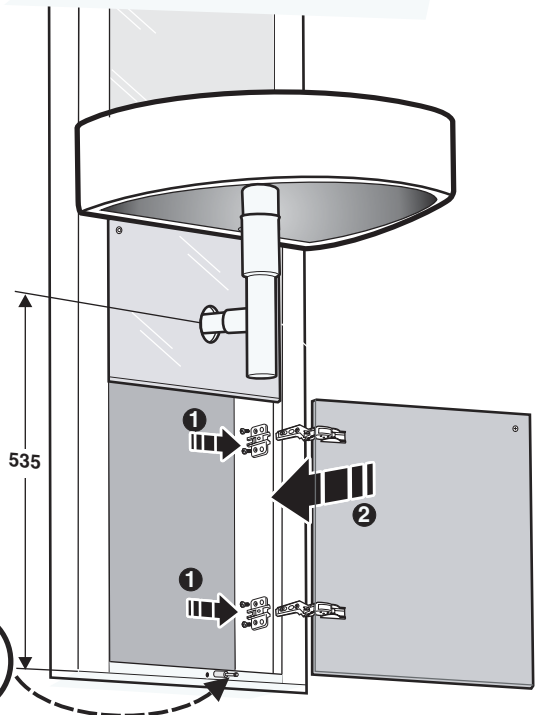
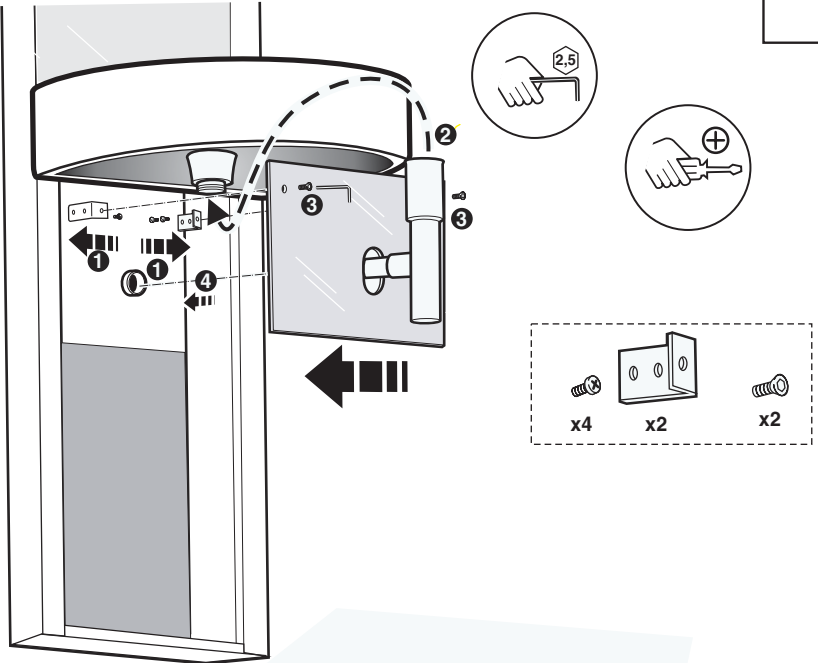


# 6

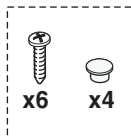
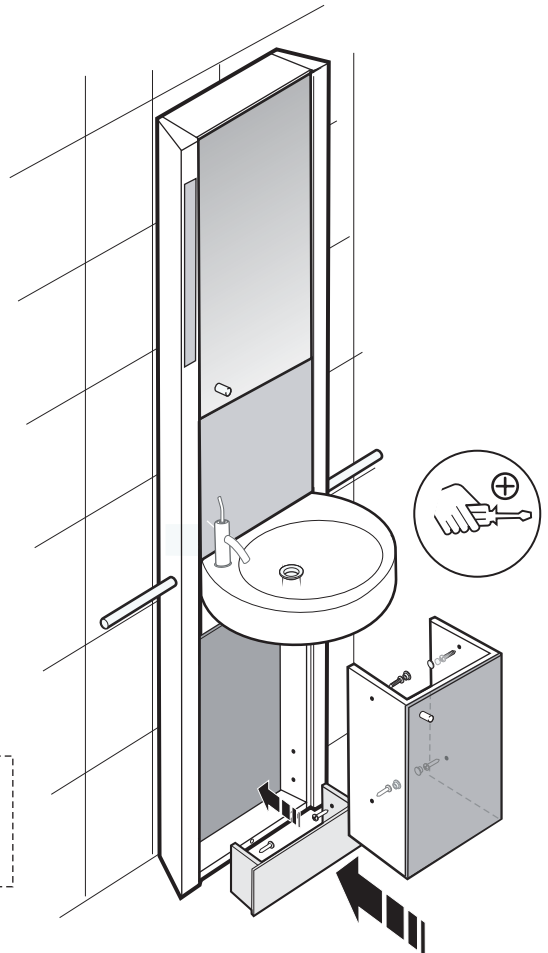
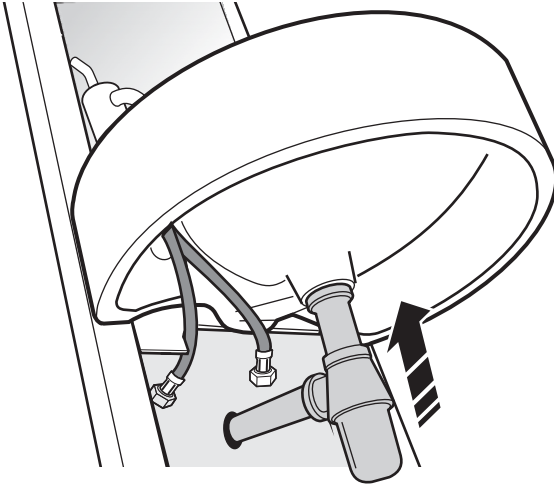


# 7

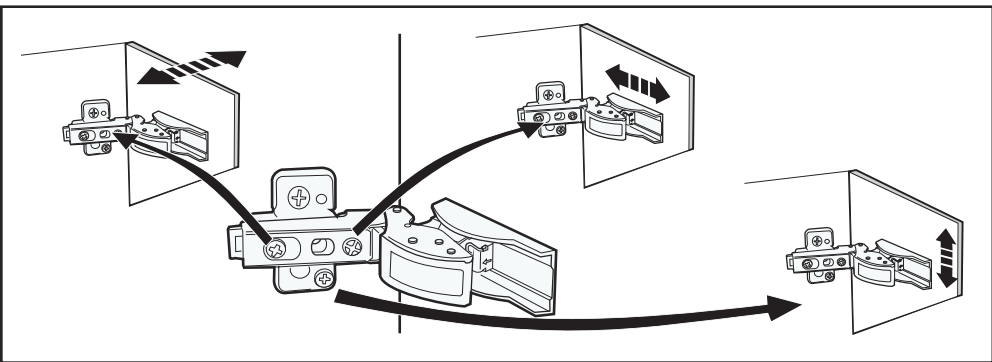
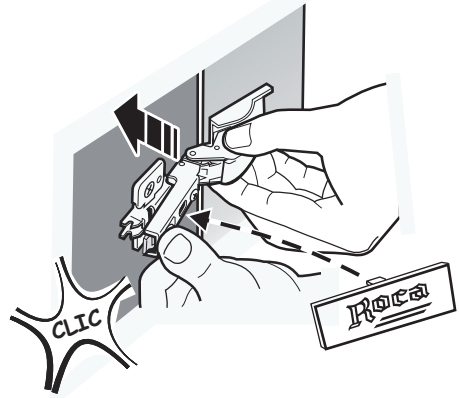
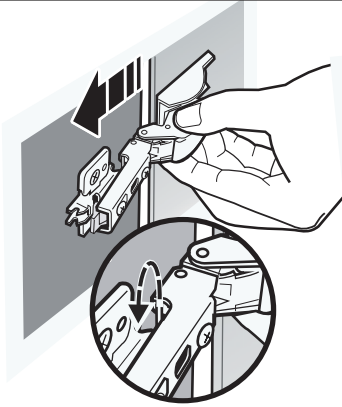
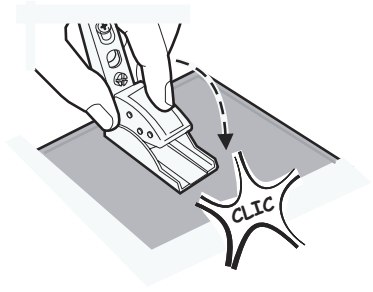
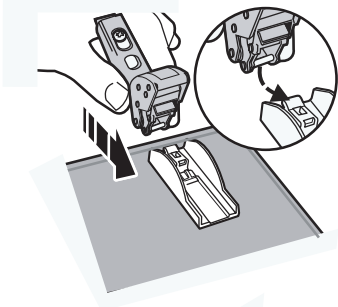
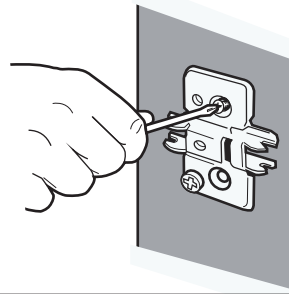
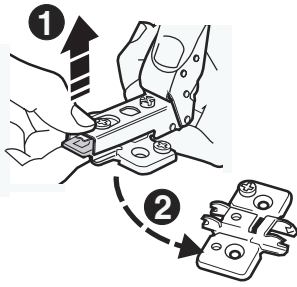
## 7.1



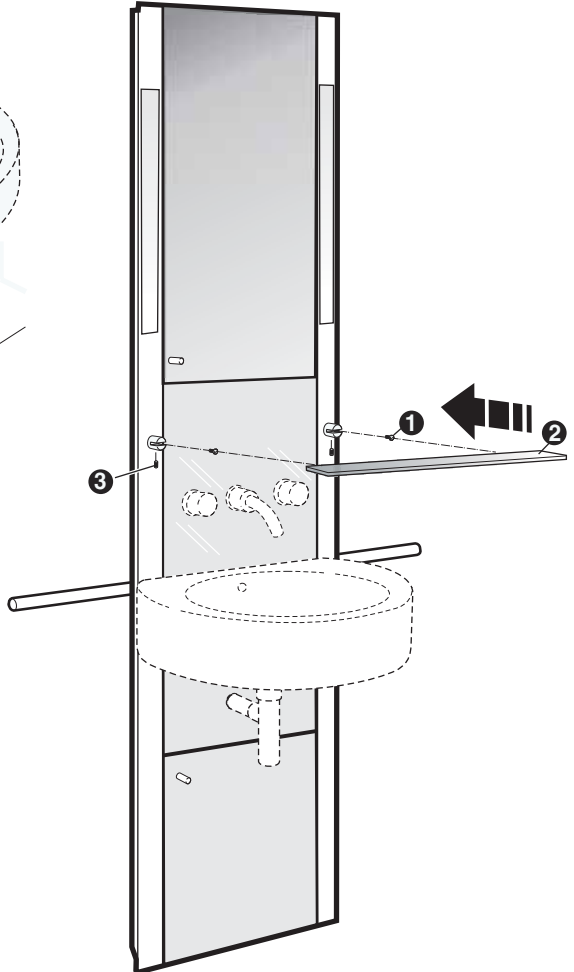
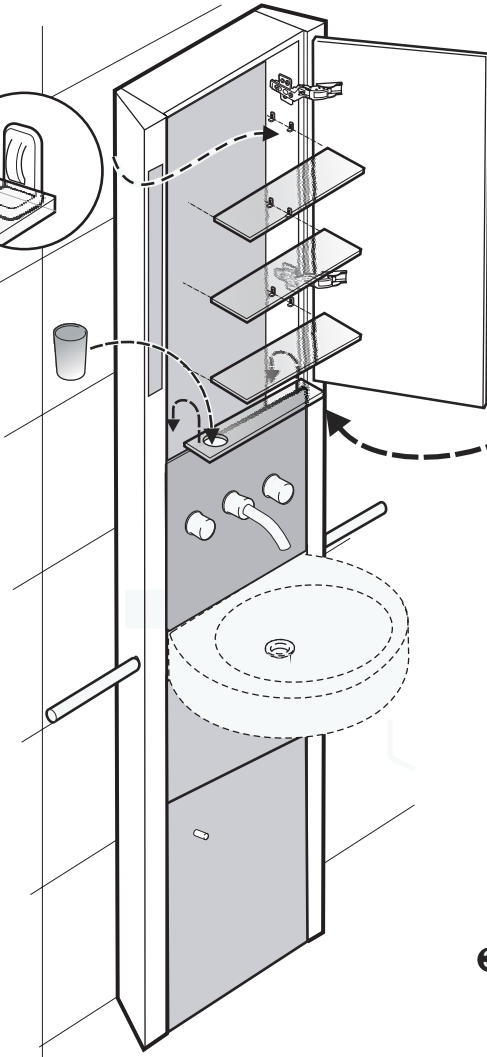
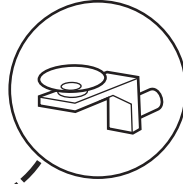
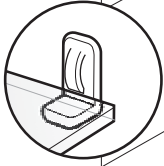
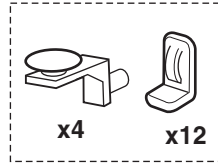
7.2

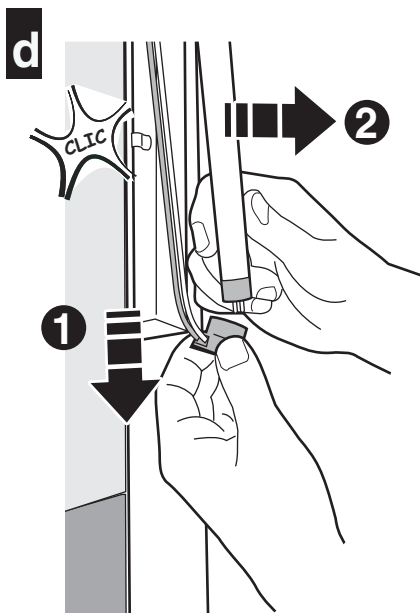
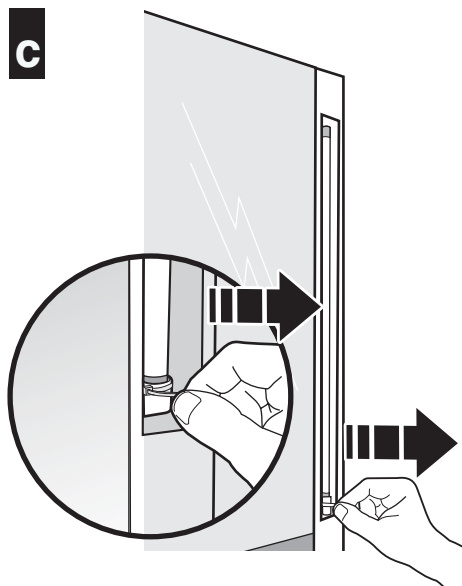
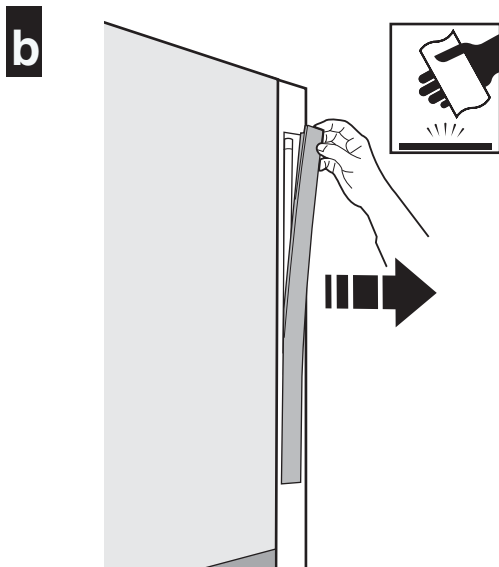
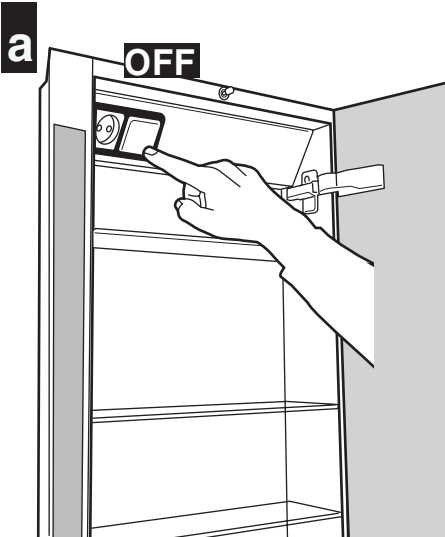


8



9







Luminaria de Clase I IP.34. Puede ser instalado en el Vol. 3.  
La instalación debe efectuarla un instalador cualificado.  
Luminaria funciona a la tensión de red y debe ser desconectada para cambiar la lámpara.

Class I IP.34 fitting can be installed in Vol. 3.  
Installation should be made by a qualified installer.  
The luminaire operates at mains voltage and should be disconnected to change the bulb.

Luminaire de Classe I IP.34, il peut s'installer dans les Vol. 3.  
La installation doit être effectuée par une personne qualifiée.  
La lumière fonctionne sous tension de réseau et doit être débranchée lors du changement de la lampe.

Diese Beleuchtung der Klasse I IP.34 kann in den Bereichen 3 der Badezimmer installiert werden.  
Die Einrichtung mußt für eine befähigte Person gemacht werden.  
Festblechtung funktioniert mit Spannung und solit ausgeschait sein um die Lampe zu wechsein.

Lampada di Classe I IP.34. Si può installare nel Vol. 3.  
L'installazione deve essere effettuata da un installatore specializzato.  
La luce funziona a tensione di rete. Prima di cambiare la lampada assicurarsi che sie disconnessa.

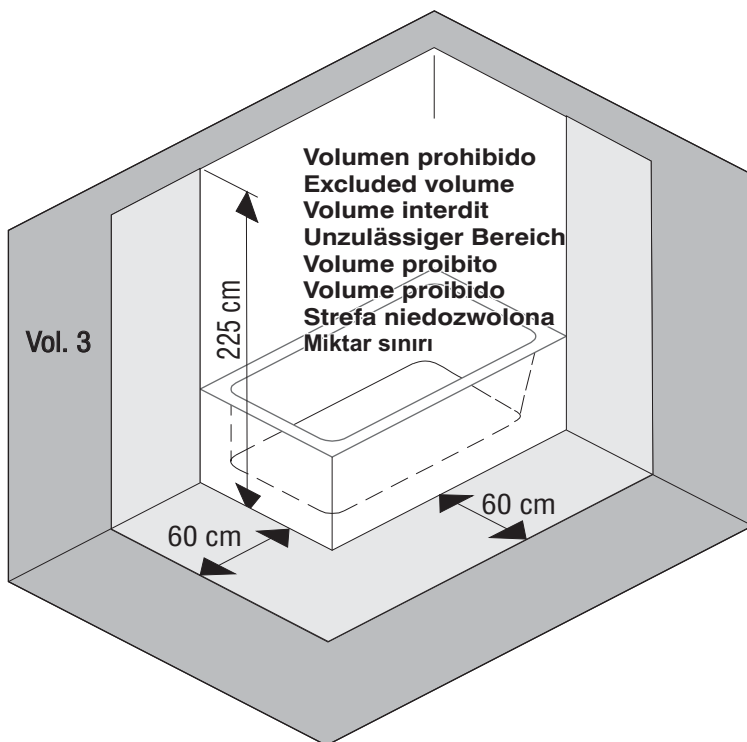
Luminária de Classe I IP.34. Pode ser instalado em Vol.3.  
A instalação tem que ser feita por um instalador qualificado.  
A luminária funciona com a tensão da rede e deve se desligada para mudar as âmpadas.

Oświetlenie klasy I IP.34 Może być instalowana w strefie 3.  
Instalacja powinna być wykonywana przez instalatora z uprawnieniami  
Oświetlenie zasilane jest z sieci elektrycznej i należy je rozłączyć, aby zmienić element oświetleniowy

Birinci sınıf aydınlatma elemanı IP.34. Armatürler 3, kademedede montaj edilmelidir.  
Montaj yetkili kişiler tarafından yapılmalıdır.  
Aydınlatma elemanı ana voltaj ile çalışmaktadır. Ampul değiştirilirken fiş çekilmelidir.



A special instruction is intended only for UK installers and the countries where the plug socket is prohibited in bathrooms. Please, follow the instruction 8-58401 attached in specific plastic bag.



230 V ~ 2X14W  
 T5 F IP34



**Roca Sanitario, S.A.**  
 Avda. Diagonal, 513  
 08029 Barcelona -  
 SPAIN  
 Teléfono 93 366 1200  
 Fax 93 419 4501  
 www.roca.es

**Roca**