

Montaje y uso
Assembly and use
Montage et utilisation
Montage - und Gebrauchsanleitung
Montaggio e utilizzazione
Montagem e utilização
Montażu i użytkowania
Montajı ve kullanımı

Roca

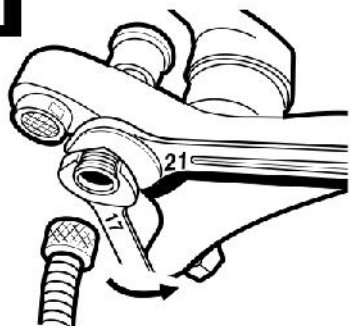
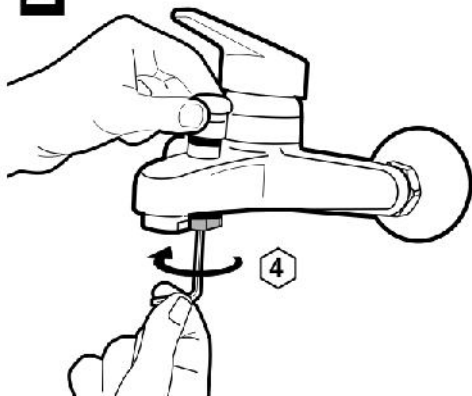
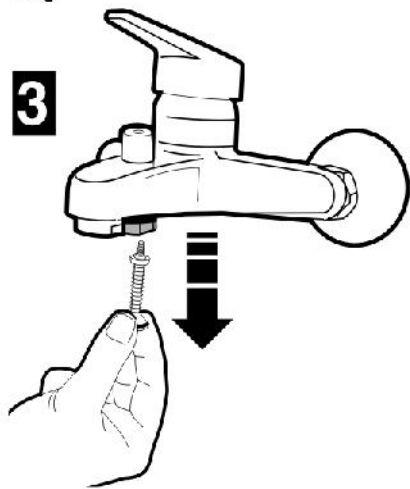
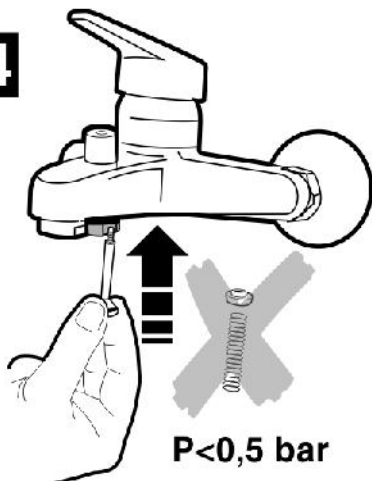
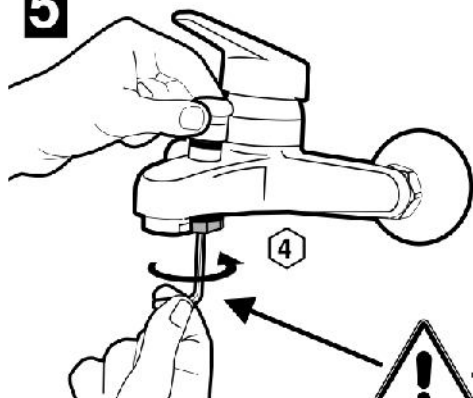
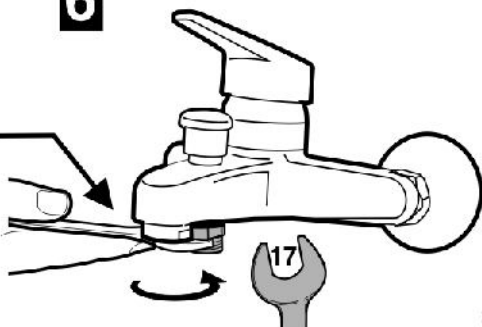
INVERSOR / DIVERTER INVERSEUR / WECHSELHEBEL DEVIATORE / INVERSOR PRZEŁĄCZNIK PRYSZNIC KRAŃ / YÖNLENDİRİCİ

Cambio automático a manual
Changing from automatic to manual
Passage de automatique a manuel
Umstellung des automatisches auf handbetrieb.
Cambio da automatico a manuale
Alteração do automático para manual
Przejście z trybu automatycznego na ręczny
Otomatikten geçiş manual kullanıma



M5: 5-251582

M6: 5-251586

1**2****3****4****5****6**

No apretar excesivamente
 Do not overtighten
 Ne pas trop serrer
 Nicht übermäßig stark anziehen
 Non serrare eccessivamente
 Não apertar excessivamente
 Nie dokręcać za mocno

